

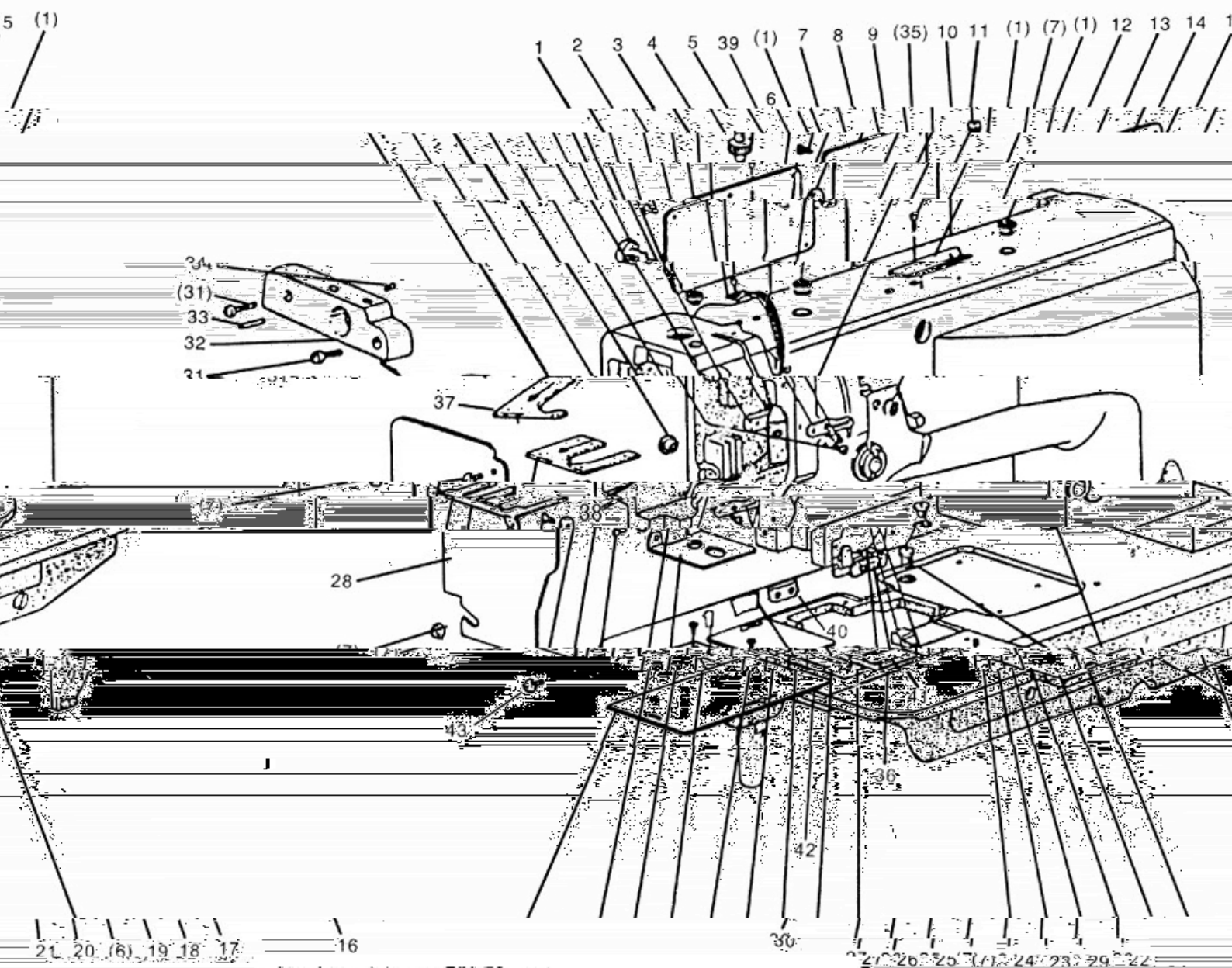


零件样本

Parts Book

1、机壳部件

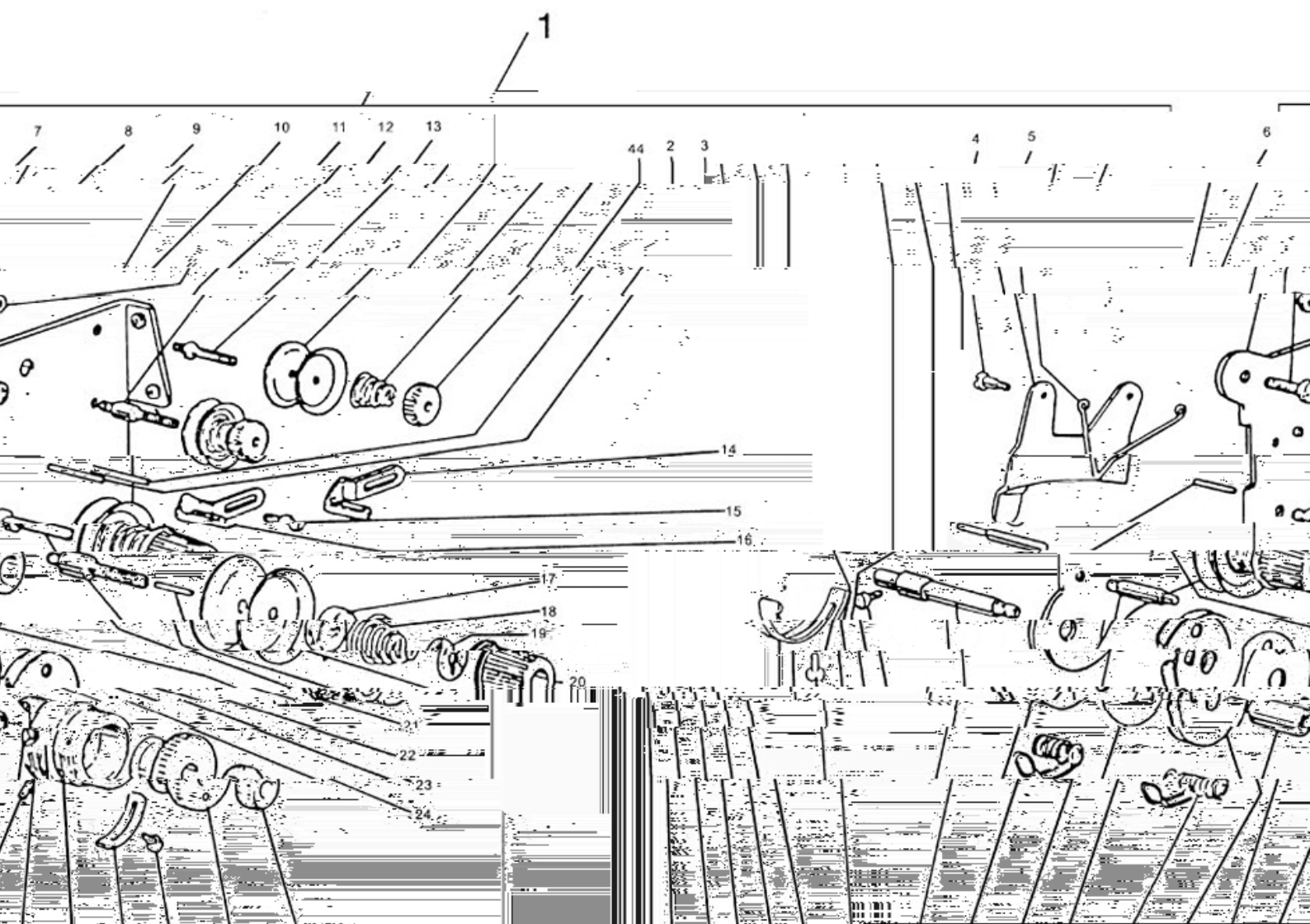
^ PARTS AND IT'S ACCESSORIES



NO	CODE		NAME	AMT					
				2052	2052	2052	2252	2252	2252
				-3	-5	H	-3	-5	H
1	PF20520101		RUBBER PLUG	5	5	5	5	5	5
2	PF20520102		SCREW	2	2	2	2	2	2
3	PF20520103		SPACER	1	1	1	1	1	1
4	PF20520104		O L GUARD PLATE	1	1	1	1	1	1
5	PF20520105	()	THREAD GUI DE	1	1	1	1	1	1
6	PF20520106		SCREW SM \varnothing /64" × 40 L=6.5	2	2	2	2	2	2
7	PF20520107		SCREW	14	14	14	14	14	14
8	PF20520108	()	SI DE COVER(LEFT)	1	1	1	1	1	1
9	PF20520109		THREAD TAKE-UP COVER	1	1	1	1	1	1
	PF22520109		THREAD TAKE-UP COVER				1	1	1
10	PF20520110		THUMB SCREW	1	1	1	1	1	1
11	PF20520111		SPECI AL NUT	1	1	1	1	1	1
12	PF20520112	()	SUDE COVER(RI GHT)	1	1	1	1	1	1
13	PF20520113		RUBBER PLUG	1	1	1	1	1	1
14	PF20520114		SCREW SM1/64" × 40 L=8	2	2	2	2	2	2
15	PF20520115		THREAD GUI DE	1	1	1	1	1	1
16	PF20520116		CAP	2	2	2	2	2	2
17	PF20520117		SCREW SM3/64" × 32 L=4	1	1	1	1	1	1
18	PF20520118	()	SLI DE PLATE COMPLETE	1	1	1	1	1	1
19	PF20520119	()	THREAD GUI DE(MIDDLE)	1	1	1	1	1	1
20	PF20520120	()	THREAD GUI DE(LOW)	1	1	1	1	1	1
21	PF20520106		SCREW SM \varnothing /64" × 40 L=6.5	1	1	1	1	1	1
22	PF6150138		SCREW	1	1	1	1	1	1
23	PF20520123	()	SCREW SM \varnothing /64" × 40 L=6.5	1	1	1	1	1	1
24	PF20520124		COVER	1	1	1	1	1	1
	PF22520124		COVER				1	1	1
25	PF555068		SCREW SM \varnothing /64" × 40 L=7	2	2	2	2	2	2
26	PF20520126		O L GUARD PLATE	1	1	1	1	1	1
	PF22520126		O L GUARD PLATE				1	1	1
27	PF20520127		FELT	1	1				
28	PF22520128		FACE PLATE				1	1	1
	PF20520128		FACE PLATE	1	1	1			
29	PF68425G02	(1/4)	NEEDLE LATE	1	1	1	1	1	1
	PF68725G02	(1/4) H	NEEDLE LATE			1			1
30	PF20520130	()	SLI DE PLATE(LEFT)	1	1	1	1	1	1
31	PF22520131		O L GUARD PLATE SM1/64" × 40 L=15				2	2	2
32	PF22520132		SHAFT MOUNTI NG BRACKET				1	1	1
33	PF22520133	A ()	PI N				2	2	2
34	PF6150114		SCREW SM1/64" × 40 L=5.5				2	2	2
35	PF68425B27		SCREW SM1/4" × 40 L=5				1	1	1
36	PF20520136	()	SLI DE PLATE(RI GHT)	1	1	1	1	1	1
	PF20520127		FELT				1	1	1
38	PF20520138		O L SH IELD PLATE				1	1	1
39	PF20520139		SCREW				1	1	
40	/		BASE FI TTI NG PLATE	1	1	1	1	1	1
41	PF20520141		FELT	1	1	1	1	1	1
42	PF68425A02		PI N	1	1	1	1	1	1
43	PF20520107		SCREW	1	1	1	1	1	1

2、夹线调节部件

THREAD TENSION REGULATOR MECHANISM



> LS2052 LS2252 > 2.

THREAD TENSION REGULATOR MECHANISM

NO	CODE		NAME	AMT					
				2052	2052	2052	2252	2252	2252
				-3	-5	H	-3	-5	H
1	PF20520201	-3	THREAD TENSION ARM	1			1		
	PF2052020101	-5	THREAD TENSION ARM		1	1		1	1
2	/		TENSION RELEASE PLATE	1	1	1	1	1	1
3	/		TENSION RELEASE SPRING	1	1	1	1	1	1
4	/		MOUNTING PLATE	1	1	1	1	1	1
5	/		SCREW	2	2	2	2	2	2
6	/		NUT	2	2	2	2	2	2
	/		NUT				2	2	
7	/		THREAD TENSION SPLITTING	1	1	1	1	1	1
8	/		THREAD TENSION SPLITTING	1	1	1	1	1	1
9	/		THREAD TENSION DISC	4	4	4	4	4	4
10	/		THREAD TENSION SPRING	2			2		
	/		THREAD TENSION SPRING		2	2		2	2
11	/		THUMB NUT	2	2	2	2	2	2
12	/		PIN	2	2	2	2	2	2
13	/		PIN	1	1	1	1	1	1
14	/	-5	GUIDE			1			1
15	/		SCREW	1	1	1	1	1	1
16	/		GUIDE	1	1	1	1	1	1
17	/		THREAD TENSION RELEASE PLATE	2	2	2	2	2	2
18	/	-3	THREAD TENSION SPRING	2			2		
	/	-5	THREAD TENSION SPRING		2	2		2	2
19	/		THUMB NUT REVOLUTION STOPPER	2	2	2	2	2	2
20	/		THUMB NUT COMPLETE	2	2	2	2	2	2
21	/		THREAD TENSION COMPLETE	4	4	4	4	4	4
22	/		PIN	1			1		
	/		PIN		1	1	1	1	1
23	/		THREAD TENSION STUD	1	1	1	1	1	1
24	/		THREAD TENSION STUD	1	1	1	1	1	1
25	/		THUMB NUT	1	1	1	1	1	1
26	/		TAKE-UP SPRING GUIDE	1	1	1	1	1	1
27	/		SCREW	1	1	1	1	1	1
28	/		STOPPER	1	1	1	1	1	1
29	/		THREAD TENSION POST	1	1	1	1	1	1
30	/		SCREW SM/8" x 44 L=3.9	2	2	2	2	2	2
31	/		BUSHING	1	1	1	1	1	1
32	/		PLATE COMPLETE	1	1	1	1	1	1
33	/		THREAD TAKE-UP SPRING	1	1	1	1	1	1
34	/		PLATE	1	1	1	1	1	1
35	/		THREAD TAKE-UP SPRING	1	1	1	1	1	1
36	/		PLATE COMPLETE	1	1	1	1	1	1
37	/		SCREW	1	1	1	1	1	1
38	/		THREAD TENSION STUD	1	1	1	1	1	1

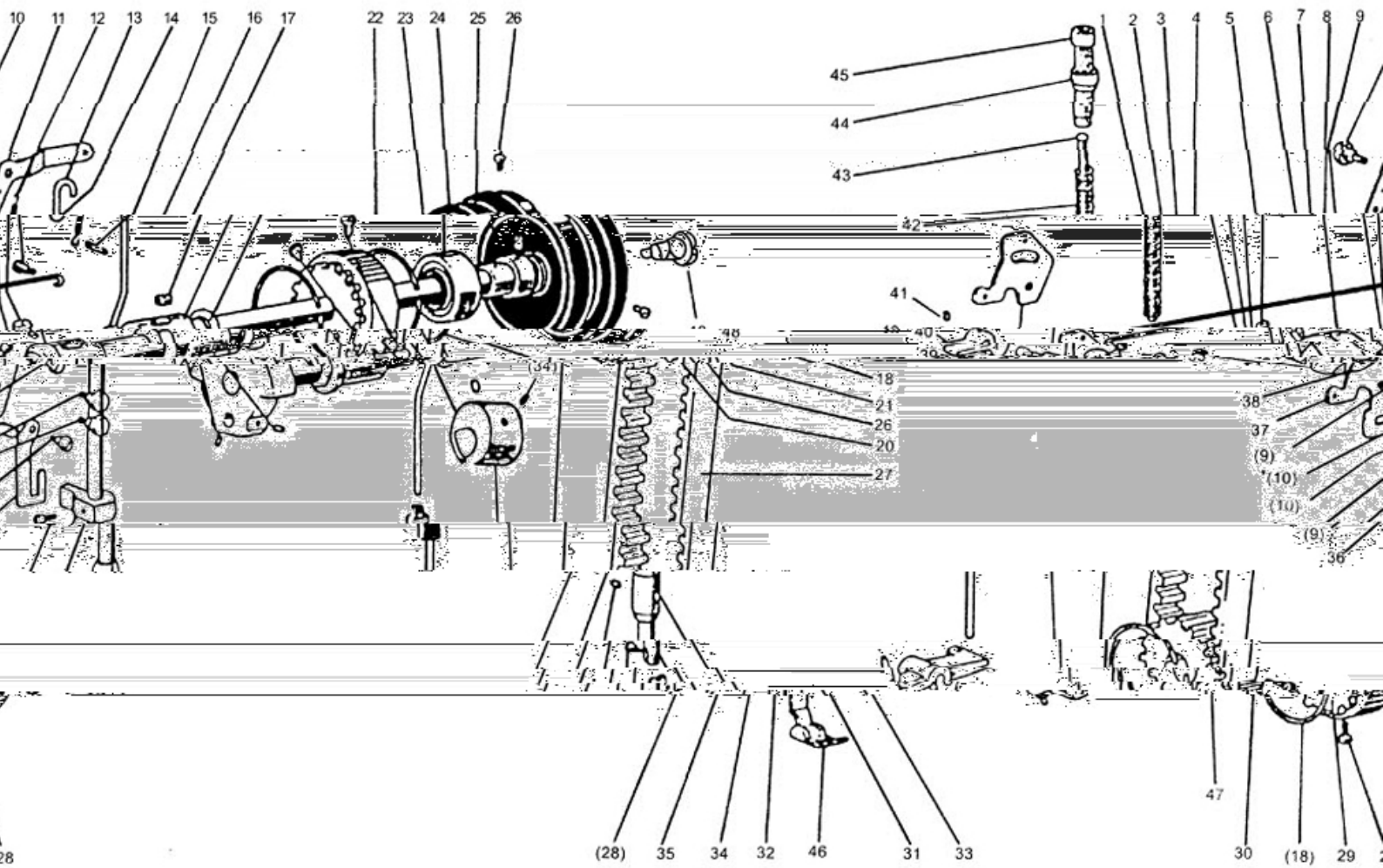
39	PF6150812		SCREW	1	1	1	1	1	1
40	/		PIN	1			1		
	/		PIN		1	1		1	1
41	PF20520241		TENSION RELEASING PIN	1	1	1	1	1	1
42	PF20520102		SCREW SM ϕ /64" x 40 L=6.5	2	2	2	2	2	2
43	PF20520243		STOPPER	1	1	1	1	1	1
44			SCREW	2	2	2	2	2	2

2、上轴压脚部件

FOOT MECHANISM

3、上轴压脚部件

UPPER SHAFT PRESSER

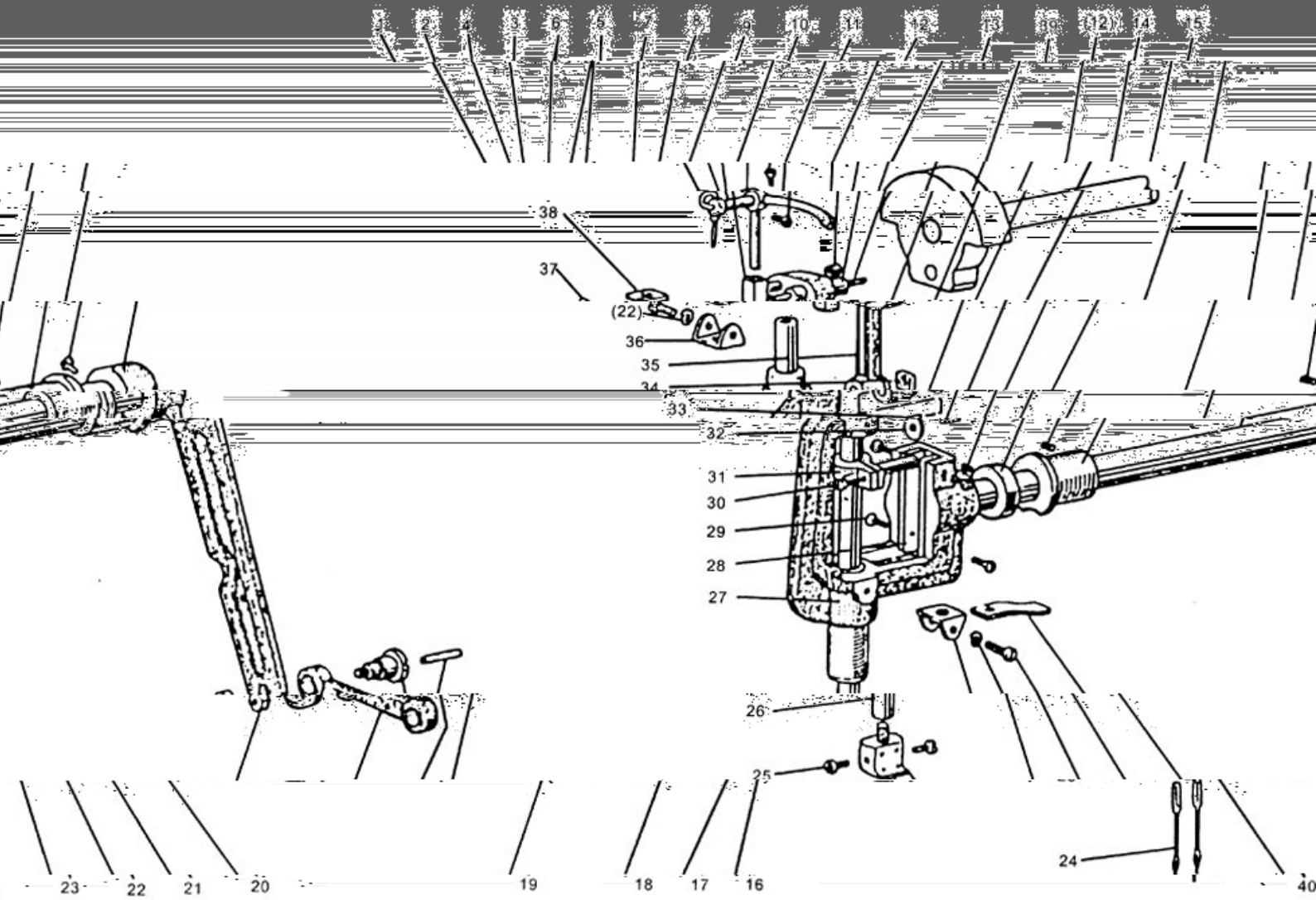


NO	CODE		NAME	AMT					
				2052	2052	2052	2252	2252	2252
				-3	-5	H	-3	-5	H
1	PF20520301		NEEDLE BAR CRANK COMPLETE	1	1				
	PF2052H0301		NEEDLE BAR CRANK COMPLETE			1			
	PF22520301		NEEDLE BAR CRANK COMPLETE				1	1	1
2	PF6150304		SCREW SM1/4" × 40 L=8	1	1	1	1	1	1
3	PF5550625		SCREW SM1/4" × 40 L=6	1	1	1	1	1	1
4	PF6150214		SCREW SM ϕ 3/32" × 28 L=13	1	1	1	1	1	1
5	PF6150215		SCREW	1	1	1	1	1	1
6	PF555022		SCREW	1	1	1	1	1	1
7	PF20520307	()	ARMSHAFT BUSHING COMPLETE(LEFT)	1	1	1	1	1	1
8	PF20520308		FELT	2	2	2	2	2	2
9	PF615079		SCREW	1	1	1	1	1	1
10	PF20520310 (PF6150714)	()	SCREW	3	3	3	3	3	3
11	PF20520311	()	KNEE LIFTER LEVER (RIGHT)	1	1	1	1	1	1
12	PF20520312	()	KNEE LIFTER LEVER (RIGHT) SPRING	1	1	1	1	1	1
13	PF20520313		KNEE LIFTER CONNECTING	1	1	1	1	1	1
14	PF6150716		SPRING PIN	1	1	1	1	1	1
15	PF6150815		FELT	2	2	2	2	2	2
16	PF20520316	()	ARMSHAFT BUSHING COMPLETE (MIDDLE)	1	1	1		1	
17	PF030229		OIL SEAL	2	2	2		2	
18	/		SPRING FLANGE	3	3	3	3	3	3
19	/		SCREW SM5/64" × 28 L=10	2	2	2	2	2	2
20	PF20520802		PULLEY	1	1	1	1	1	1
21	PF6150619A		SCREW	1	1	1	1	1	1
22	PF20520322		BUSHING	1	1	1	1	1	1
23	PF20520323		BUSHING	1	1	1	1	1	1
24	PF6150610		SCREW SM5/64" × 28 L=10	2	2	2	2	2	2
25	PF20520325		PULLEY	1	1	1	1	1	1
26	PF205250802		SCREW SM5/64" × 28 L=12	2	2	2	2	2	2
27	PF20520327		COG BELT	1	1	1	1	1	1
28	PF6150610		SCREW SM5/64" × 28 L=10	2	2	2	2	2	2
29	PF20520329		PULLEY	1	1	1	1	1	1
30	PF20520330		ARMSHAFT	1	1	1	1	1	1
31	PF20520331		PRESSER BAR	1	1	1	1	1	1
32	PF20520332		SCREW	1	1	1	1	1	1
33	PF20520333		PRESSER BAR GUIDE BRACKET	1	1	1	1	1	1
34	PF6150326	()	SCREW SM5/64" × 28 L=10	2	1	2	3	3	3
35	PF20520335		PRESSER BAR GUIDE BRACKET	1	1	1	1	1	1
36	PF20520336		OPERATION PLATE	1	1	1	1	1	1
37	PF20520337	()	KNEE LIFTER LEVER (LEFT)	1	1	1	1	1	1
38	PF20520338		KNEE LIFTER ROD	1	1	1	1	1	1
39	PF20520339		DRESSER BAR LIFTING CAM	1	1	1	1	1	1
40	PF20520340		PRESSER BAR LIFT	1	1	1	1	1	1

41	PF6150114		SCREW SM1/64" × 40 L=5.5	2	2	2	2	2	2
42	PF555044		PRESSER BAR SPRING	1	1	1	1	1	1
43	PF20520343		PRESSER BAR SPRING GUIDE	1	1	1	1	1	1
44	PF20520344		SPECIAL NUT	1	1	1	1	1	1
45	PF20520345		SCREW	1	1	1			
	PF22520345	()	SCREW				1	1	1
46	PF68425G05		PRESSER FOOT COMPLETE(1/4)	1	1		1	1	
	PF68725G05		PRESSER FOOT COMPLETE(1/4)			1			1
47	PF22520347		BALANCE ECCENTRIC WHEEL				1	1	1
48			SCREW SM1/32" × 28	1	1	1	1	1	1

4 针杆挑线部件

AD TAKE-UP LEVER NEEDLE BAR ROCK MOTION MECHANIS THREE



>LS2052 LS2252> 4.

THREAD TAKE-UP LEVER NEEDLE BAR ROCK MOTION MECHANIS

NO	CODE		NAME	AMT					
				2052	2052	2052	2252	2252	2252
				-3	-5	H	-3	-5	H
1	PF5550627		Q L WCK	1	1	1	1	1	1
2	PF20520402		THREAD TAKE-UP GUI DE BRACKET PI N	1	1	1	1	1	1
3	PF20520403	32H	THREAD TAKE-UP LEVER	1	1				
	PF2052H0403	33H	THREAD TAKE-UP LEVER			1			
4	PF20520404	5. 5	THREAD TAKE-UP LI NK	1	1				
	PF2052H0404	4. 76	THREAD TAKE-UP LI NK			1	1	1	1
5	/		PLUG	1	1	1	1	1	1
6	PF555022		SDREW SM15/64" × 28 L=12	3	3	3	3	3	3
7	PF20520407		NEEDLE BAR CRANK PI N	1	1	1	1	1	1
8	/		Q L WCK	1	1	1	1	1	1
9	PF5550625		SCREW SM1/4" × 40 L=6	1	1	1	1	1	1
10	PF20520410		COLLER COMPLETE	1	1	1	1	1	1
11	PF6150610		SCREW SM15/64" × 28 L=7	1	1	1	1	1	1
12	PF20520412		NEEDLE BAR ROCK SHAFT BUSH NG	2	2	2	2	2	2
13	/		NEEDLE BAR ROCK SHAFT	1	1	1	1	1	1
14	PF0302646	()	SCREW SM1/4" × 24 L=16	1	1	1	1	1	1
15	PF20520415		NEEDLE BAR ROCK SHAFT CRANK	1	1	1	1	1	1
16	PF6150627		Q L WCK	1	1	1	1	1	1
17	PF20520417		SCREW	1	1	1	1	1	1
18	PF20520418		LI NK	1	1	1	1	1	1
19	PF20520419		NUT	1	1	1	1	1	1
20	PF20520420		FELT	1	1	1	1	1	1
21	PF20521129		SCREW SM1/8" × 44 L=4. 8	2	2	2	2	2	2
22	/		WASHER	4	4	4	4	4	4
23	PF20520423		HOLDER	1	1	1	1	1	1
24	PFDTDP514	14#	NEEDLE	2					
	PFDTDP519	19#	NEEDLE		2			2	
	PFDTDP522	22#	NEEDLE			2			2
25	/		SCREW SM1/64" × 40 L=3	2	2	2	2	2	2
26	/		NEEDLE BAR	1	1	1	1	1	1
27	PF20520427		NEEDLE BAR ROCK FRAME	1	1	1	1	1	1
28	/		WASHER	2	2	2	2	2	2
29	/		SCREW SM1/32" × 56 L=4	4	4	4	4	4	4
30	/		SCREW SM1/64" × 40 L=8. 5	1	1	1	1	1	1
31	/		NEEDLE BAR CONNECTI NG STUD	1	1	1	1	1	1
32	PF20520432		WASHER	1	1	1	1	1	1
33	/		FELT	1	1	1	1	1	1
34	/		SQUARE BLOCK	1	1	1	1	1	1
35	/		THREAD TAKE-UP LI NK	1	1	1	1	1	1
36	PF20520436		HOLDER	1	1	1	1	1	1
37	PF20521129		SCREW SM1/8" × 44 L=3. 5	2	2	2	2	2	2
38	PF20520438		FELT	1	1	1	1	1	1
39	PF6150326	()	SCREW SM15/64" × 28 L=10	1	1	1	1	1	1
40	PF68425G01		HOLDER	1	1	1	1	1	1

5、针杆挑线部件

THREAD TAKE-UP LEVER NEEDLE BAR ROCK MOTION MECHANISM

9 (17) 20 21 22 23

7 8 1 2 3 4 5 6 9 10 11

16 17 18 19



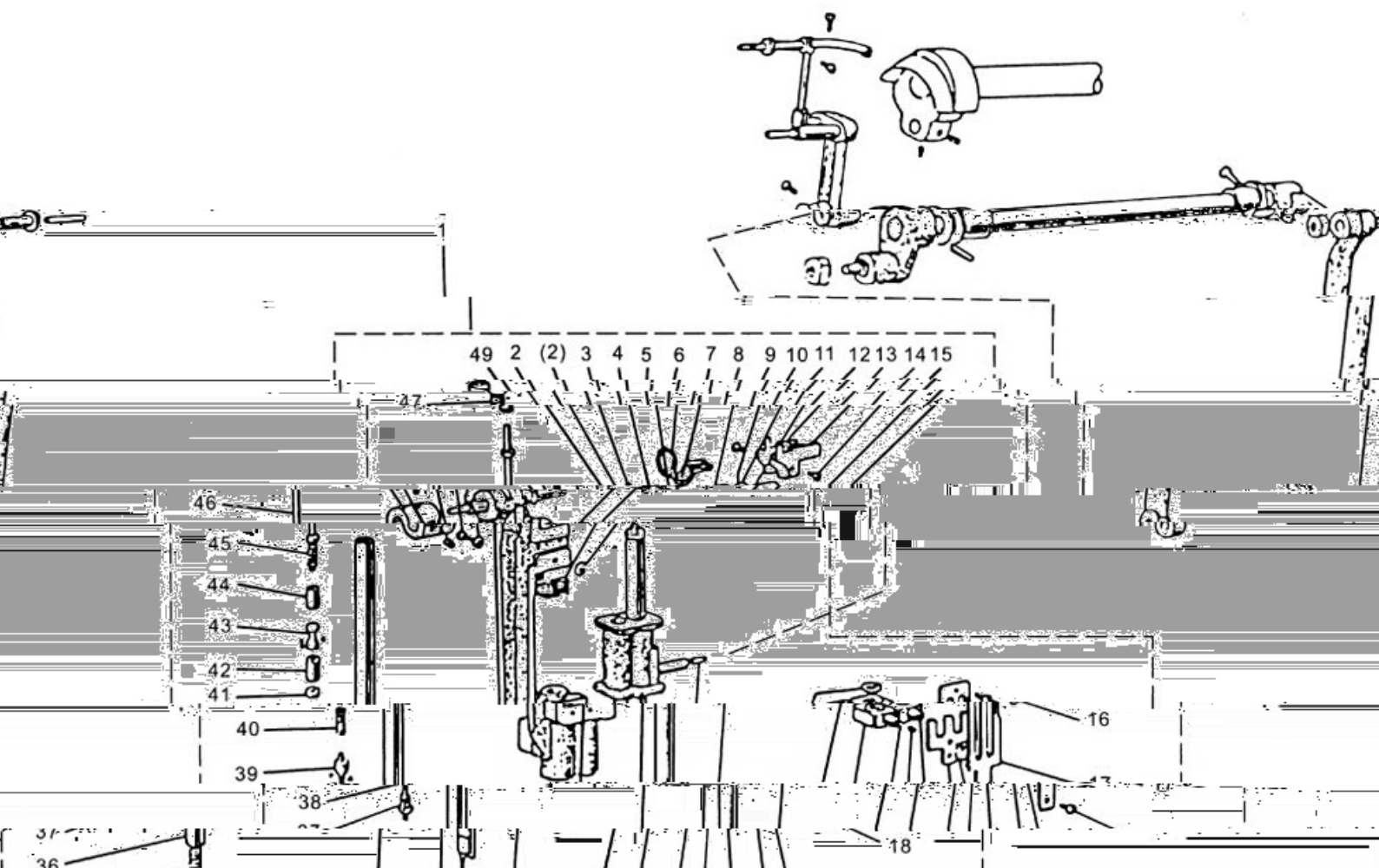
>LS2052 LS2252> 5.

THREAD TAKE-UP LEVER NEEDLE BAR ROCK MOTION MECHANIS

NO	CODE		NAME	AMT					
				2052	2052	2052	2252	2252	2252
				-3	-5	H	-3	-5	H
1	PF6150627		CI L WCK				1	1	1
2	PF20520402		THREAD TAKE-UP GUI DE BRACKET PI N				1	1	1
3	PF22520503	34H	THREAD TAKE-UP LEVER				1	1	
	PF2252050301	35H	THREAD TAKE-UP LEVER						1
4	PF555022		SCREW SM5/64" × 28 L=12				3	3	3
5	PF22520505		THREAD TAKE-UP LI NK				1	1	1
6	/		PLUG				1	1	1
7	PF6150627		CI L WCK				1	1	1
8	PF20520407		NEEDLE BAR CRANK PI N				1	1	1
9	PF22520509		THREAD TAKE-UP LI NK				1	1	1
10	PF6150812		SCREW SM9/64" × 40 L=11				1	1	1
11	PF22520511		TAKE-UP SPI NG GUI DE				1	1	1
12	PF22520512		SLI DE BLOCK				1	1	1
13	PF22520513		SCREW				1	1	1
14	PF22520514	()	NEEDLE BAR VI BRATI NG CRANK(LEFT)				1	1	1
15	PF22520515	()	PI N				1	1	1
16	PF22520516		WASHER				1	1	1
17	PF20520517		NEEDLE BAR ROCK SHAFT BUSH NG				1	1	1
18	PF22520518		NEEDLE BAR				1	1	1
19	PF0302646	()	SCREW SM1/4" × 24 L=16				1	1	1
20	PF22520520	()	NEEDLE BAR VI BRATI NG CRANK(RI GHT)				1	1	1
21	PF20520419		NUT				1	1	1
22	PF20520417		SCREW				1	1	1
23	PF6150627		CI L WCK				1	1	1
24	PF22520524		LI NK				1	1	1

6、针杆调节

NEEDLE BAR



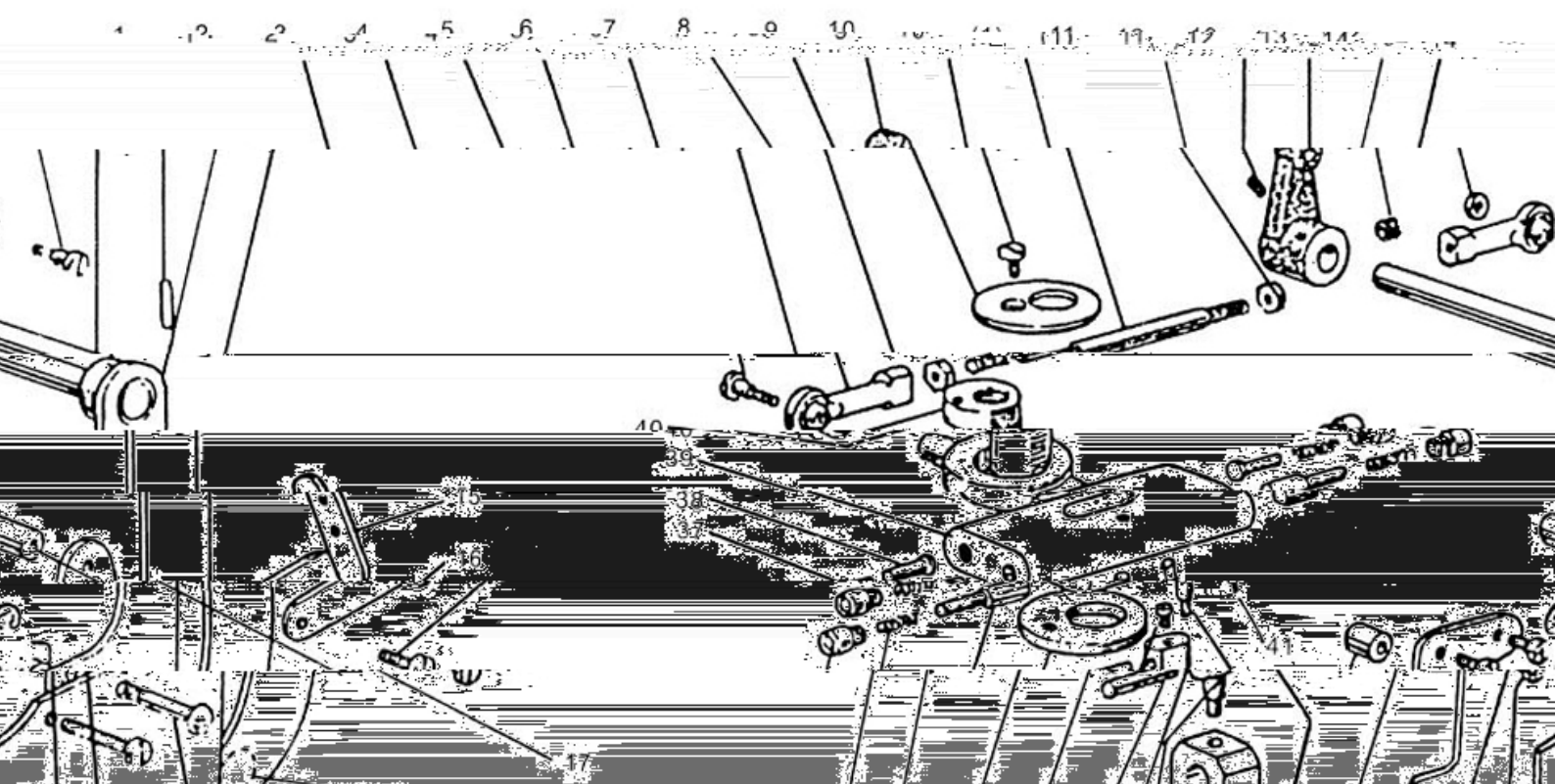
>LS2052 LS2252> 6.

NEEDLE BAR

NO	CODE		NAME	AMT					
				2052	2052	2052	2252	2252	2252
				-3	-5	H	-3	-5	H
1	PF22520601		NEEDLE BAR ROCK SHAFT ASSY				1	1	1
2	PF6150405		SCREW SM5/64" × 28 L=4.5				2	1	1
3	/		SCREW SMØ/64" × 40 L=6				1	1	1
4	/		SPI NG				1	1	1
5	/		CI L WCK				1	1	1
6	/		CI L WCK				1	1	1
7	/		NEEDLE BAR ROCK SHAFT				1	1	1
8	/		SPI NG PI N				1	1	1
9	PFHC-E7	E	RETAI N I NG RI NG				1	1	1
10	PF22520610		CHANCE OVER CRANK SHAFT				1	1	1
11	/		HOLDER				1	1	1
12	/		HOLDER				1	1	1
13	/		SCREW SMØ/64" × 40 L=4				1	2	1
14	/		STOPPER				2	1	1
15	/		WASHER				1	1	1
16	/		SCREW SMØ/64" × 40 L=6.5				1	1	1
17	/		GUI LD PLATE				1	1	1
18	/		SCREW SMØ/64" × 40 L=5				1	1	1
19	/		SCREW SMØ/32" × 56 L=4.2				1	2	1
20	/		BAR ROCK SHAFT				2	1	1
21	/		HOLDER				1	1	1
22	/		SCREW SMØ/64" × 40 L=3.5				1	2	1
23	/		COPPER TUCK				2	2	1
24	/		HOLDER				1	1	1
25	/		WASHER				4	4	1
26	/		HOLDER				1	1	1
27	/		NEEDER BAR				2	2	1
28	PF22520628		SCREW				1	1	1
29	/		WASHER				1	1	1
30	PF22520630		NEEDLE GUI DE CAKE				2	2	1
31	/		NEEDLE				2		1
	/		NEEDLE					2	2
32	/		SCREW				2	2	2
33	/		SCREW SM1/8" × 44 L=3.9				3	3	3
34	/		STOPPER				2	2	2
35	/		SPI NG				2	2	2
36	/		NEEDLE BAR				2	2	2
37	/		SCREW				2	2	2
38	/		BALL BEARI NG				12	12	12
39	/		ROLLER				2	2	2
40	/		SPI NG				2	2	2
41	/		NUT				2	2	2
42	/		NUT				2	2	2
43	/		PI N				2	2	2
44	/		BUSH				2	2	2

45	/		SPI NG				2	2	2
46	/		BUSH				2	2	2
47	/		SCREW				1	1	1
48	/		FELT				1	1	1
49	PF 22520649		BUSH				1	1	1

7. 针杆变换机构部件



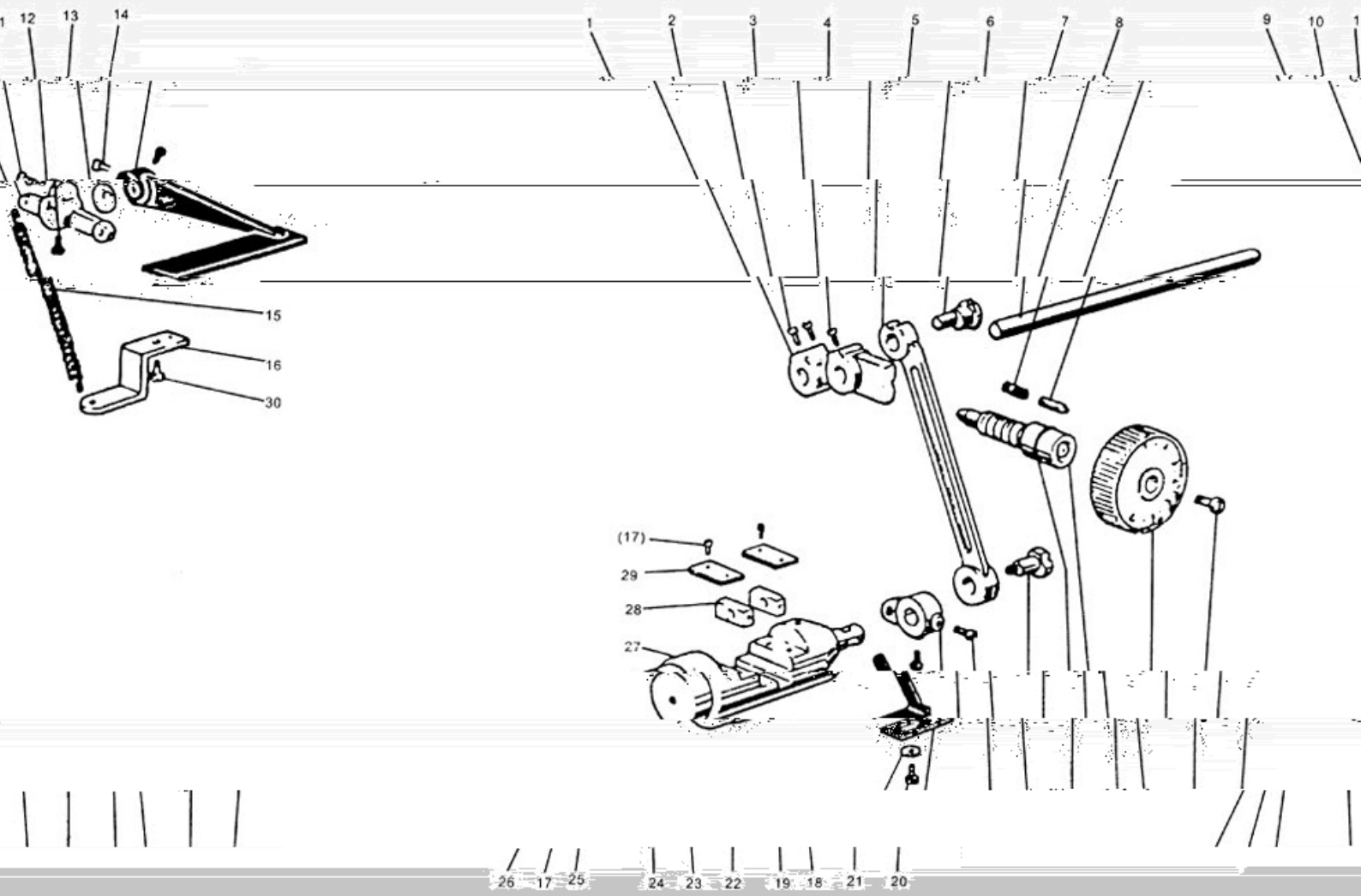
>LS2052 LS2252> 7.

NEEDLE BAR FLIP-UP MECHANISM

NO	CODE		NAME	AMT					
				2052	2052	2052	2252	2252	2252
				-3	-5	H	-3	-5	H
1	PF 22520701		SCREW				2	2	2
2	PF 22520702		CONNECTI ON LI NK				2	2	2
3	PF 22520703		COVER				1	1	1
4	PF 5550635		SCREW SM $\frac{9}{64}$ " \times 40 L=6.5				1	1	1
5	PF 22520705		SCREW				1	1	1
6	PF 8520608		NUT				2	2	2
7	PF 6150114		SCREW SM $\frac{1}{64}$ " \times 40 L=5.5				1	1	1
8	PF 22520708		H I NGE CRANK				1	1	1
9	PF 22520709		SCREW SM $\frac{5}{64}$ " \times 28 L=8				1	1	1
10	BF 700N03		NUT				2	2	2
11	PF 22520711		SHAT				1	1	1
12	/		SHRI NG PI N				1	1	1
13	PF 22520714		TAKE- UP SPRI NG GUI DE				1	1	1
14	/		NEEDLE				1	1	1
15	PF 22520715		THRSAD GUI DE				1	1	1
16	PF 22520131		SCREW SM $\frac{9}{64}$ " \times 40 L=7				1	1	1
17	PF 22520717		PI PE				1	1	1
18	PF 22520718		WASHER				1	1	1
19	PF 22520718		SHAFT				1	1	1
20	PF 22520720		PLATE				1	1	1
21	PF 22520721		SPRI NG				1	1	1
22	/	E	RI NG				1	1	1
23	PF 22520723		NEEDLE CHARNGE LEVER				1	1	1
24	PF 22520724		PI N				1	1	1
25	PF 22520725		SPRI NG				1	1	1
26	PF 6150211		SCREW SM $\frac{1}{64}$ " \times 40 L=8				2	2	2
27	PF 22520727		CONNECTI NG ROD				1	1	1
28	PF 22520728		PI PE				1	1	1
29	PF 22520729		SCREW				1	1	1
30	PF 22520730		CHANGE OVER CRANK				1	1	1
31	PF 22520731		GUI DE PI N				1	1	1
32	PF 22520732		PI N				1	1	1
33	PF 22520733		WASHER				1	1	1
34	PF 22520734		PI N				2	2	2
35	PF 22520735		SPRI NG				2	2	2
36	PF 22520736		SCREW				4	4	4
37	PF 22520737		SPRI NG				2	2	2
38	PF 22520738		BUSH				2	2	2
39	PF 22520739		GUI DE				1	1	1
40	PF 22520740		BUSHI NG				1	1	1
41	PF 22520741		STOPPER PI N				1	1	1

8、针距调节部件

STITCH REGULATOR MECHANISM



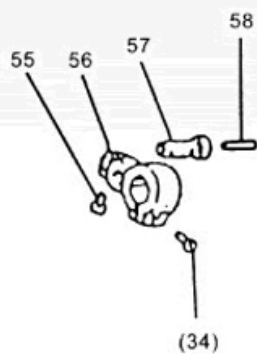
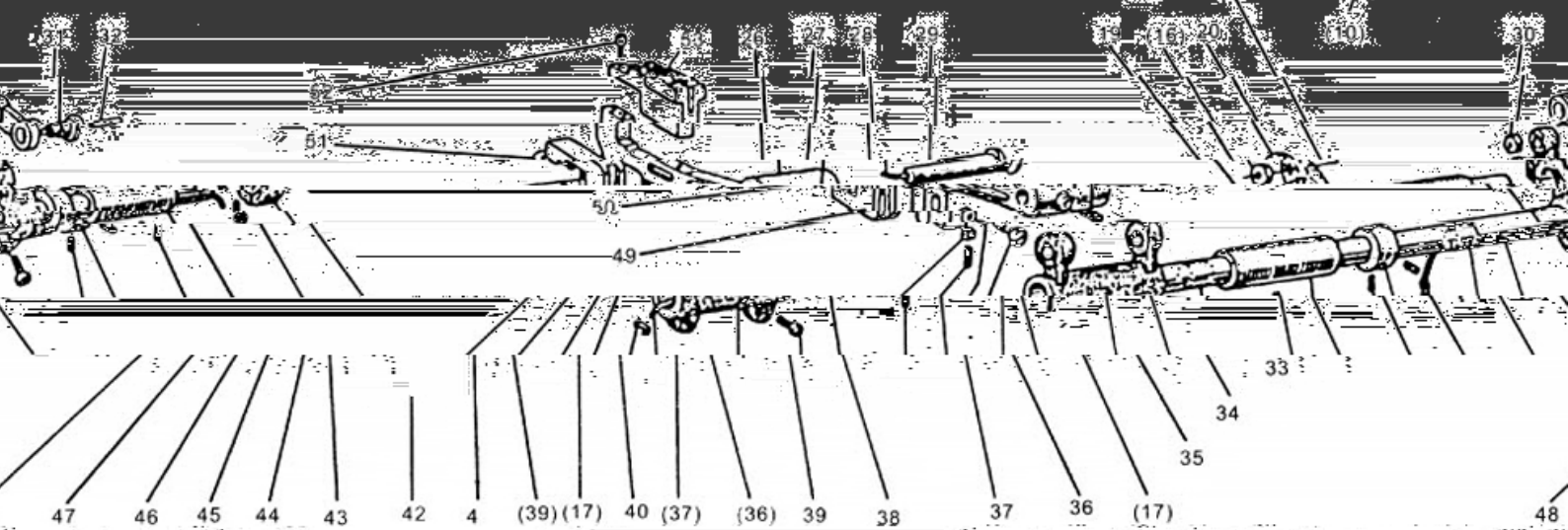
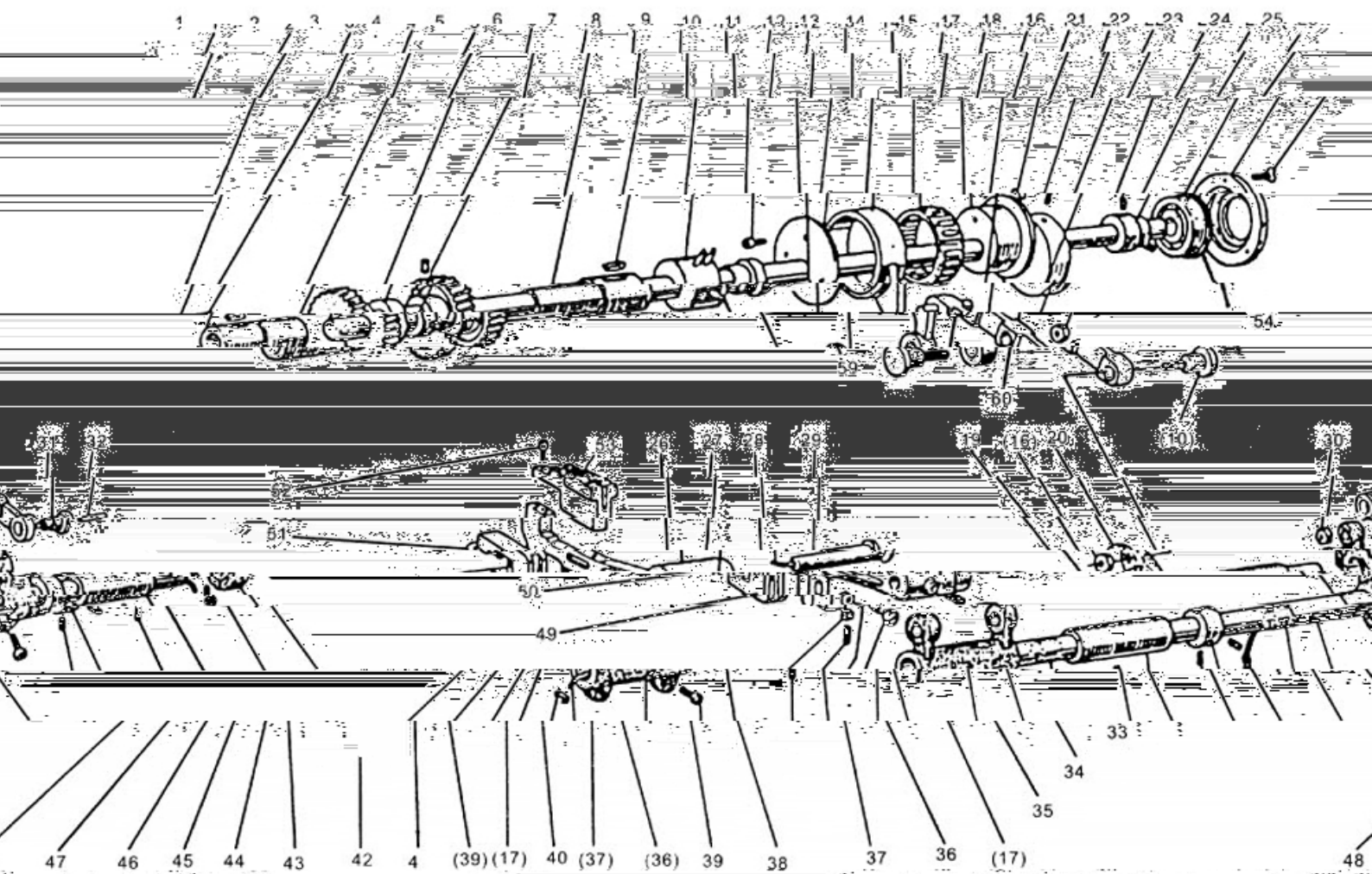
>LS2052 LS2252> 8.

STITCH REGULATOR MECHANISM

NO	CODE		NAME	AMT					
				2052	2052	2052	2252	2252	2252
				-3	-5	H	-3	-5	H
1	PF20520801		FEED REGULATOR COMPLETE	1	1	1	1	1	1
2	PF20520802		SCREW SM5/64" × 28 L=10	2	2	2	2	2	2
3	PF20520803		SCREW	1	1	1	1	1	1
4	PF20520804		CONNECTING LINK	1	1	1	1	1	1
5	PF20520805		ECCENTRIC SHAFT	1	1	1	1	1	1
6	PF20520806		REVERSE STITCH SHAFT(UPPER)	1	1	1	1	1	1
7	PF555076		SPRING	1	1	1	1	1	1
8	PF555075		STOPPER PIN	1	1	1	1	1	1
9	PF20520809		REVERSE STITCH CRANK	1	1	1	1	1	1
10	PF20520810		SCREW	1	1	1	1	1	1
11	PF20520811		SCREW SM1/64" × 40 L=8.5	1	1	1	1	1	1
12	PF6150627		WASHER	1	1	1	1	1	1
13	PF6150610		SCREW SM5/64" × 28 L=10	2	2	2	2	2	2
14	PF20520814		REVERSE FEED LEVER	1	1	1	1	1	1
15	PF20520815		SPRING FOR REVERSE FEED CRANK	1	1	1	1	1	1
16	PF20520816		BRACKET FOR SPRING	1	1	1	1	1	1
17	PF6150211		SCREW SM1/64× 40 L=8	6	6	6	6	6	6
18	PF20520818		SCREWBAR	1	1	1	1	1	1
19	PF6150629	O	O-RING	1	1	1	1	1	1
20	PF6150633		SCREW SM8/16" × 28 L=8	1	1	1	1	1	1
21	/	4	DIAL	1			1		
	PF20520821	5	DIAL		1			1	
	PF2052H0821	7	DIAL			1			1
22	PF6150518		HINGE PIN	1	1	1	1	1	1
23	PF20520823		SCREW	1	1	1	1	1	1
24	PF20520824		STITCH REGULATING CRANK LOWER	1	1	1	1	1	1
25	PF20520825		HOLDING PLATE FOR REVERSE BAR	1	1	1	1	1	1
26	/		WASHER	1	1	1	1	1	1
27	PF20520827		REVERSE BAR	1	1	1	1	1	1
28	/		SQUARE BLOCK	2	2	2	2	2	2
29	PF20520829		GUIDE PLATE	2	2	2	2	2	2
30			BRACKET FOR SPRING SCREW	1	1	1	1	1	1

9、下轴、送布轴部件

LOWER SHAFT AND FEED ROCK SHAFT MECHANISM



>LS2052 LS2252> 9.

LOWER SHAFT AND FEED ROCK SHAFT MECHANISM

NO	CODE		NAME	AMT					
				2052	2052	2052	2252	2252	2252
				-3	-5	H	-3	-5	H
1	PF20520901	()	LOWER SHAFT BUSHING(LEFT)	1	1	1	1	1	1
2	/		CI L WCK	1	1	1	1	1	1
3	PF20520903		LOWER SHAFT	1	1	1	1	1	1
4	PF20520904		LOWER LIFTING CAM	1	1	1	1	1	1
5	PF20520905		SCREW SM/4" × 40 L=5	1	1	1	1	1	1
6	PF20520906	()	LOWER SHAFT BUSHING(RIGHT)	1	1	1	1	1	1
			LEVER FEED CONNECTING SCM	1			1		
	PF205209145	5.1	LEVER FEED CONNECTING SCM		1			1	
	PF2052H0914	6.2	LEVER FEED CONNECTING SCM			1			1
15	PF20520827		LINK	1	1	1	1	1	1
16	PF20520916		NUT	2	2	2	2	2	2
17	PF6150312	()	SCREW SM5/64× 28 L=10	3	3	3		3	3
18	PF6150312		SCREW	1	1	1	1	1	1
19	PF20520919		SCREW SM5/64" × 28 L=14	1	1	1	1	1	1
20	PF20520920	()	FEED ROCK SHAFT CRANK (MIDDLE)	1	1	1	1	1	1
21	PF5550625		SCREW SM/4" × 40 L=8	2	2	2	2	2	2
22	PF20520922		BUSHING	1	1	1	1	1	1
23	PF20520923		BALL BEARING	1	1	1	1	1	1
24	PF20520924		BEARING HOLDER	1	1	1	1	1	1
25	PF20520102		SCREW SM9/64" × 40 L=7.7	3	3	3	3	3	3
26	PF20520926		FEED BAR	1	1	1	1	1	1
27	PF2052052301		SCREW	1	1	1	1	1	1
28	/		CI L WCK	1	1	1	1	1	1
29	PF20520929		FEED BAR SHAFT	1	1	1	1	1	1
30	PF20520419		NUT	1	1	1	1	1	1
31	PF20520417		SCREW	1	1	1	1	1	1
32	/		CI L WCK	1	1	1	1	1	1
33	PF20520933	()	FEED ROCK SHAFT CRANK (RIGHT)	1	1	1	1	1	1
34	PF0302646	()	SCREW SM/4" × 24 L=16	2	2	2	2	2	2
35	PF20520935		FEED ROCK SHAFT BUSHING	1	1	1	1	1	1
36	PF6150512		COLLAR	2	2	2	2	2	2
37	PF6150405		SCREW SM/4" × 40 L=8	4	4	4	4	4	4
38	PF20520938		FEED ROCK SHAFT	1	1	1	1	1	1
39	/		FELT	2	2	2	2	2	2
40	PF20520940		FEED ROCK SHAFT BUSHING(LEFT)	1	1	1	1	1	1
41	PF55501013		SCREW SM8/16" × 28 L=12	1	1	1	1	1	1
42	PF20520942		FEED BAR CRANK	1	1	1	1	1	1

1 1 1
43 /
44 /
1

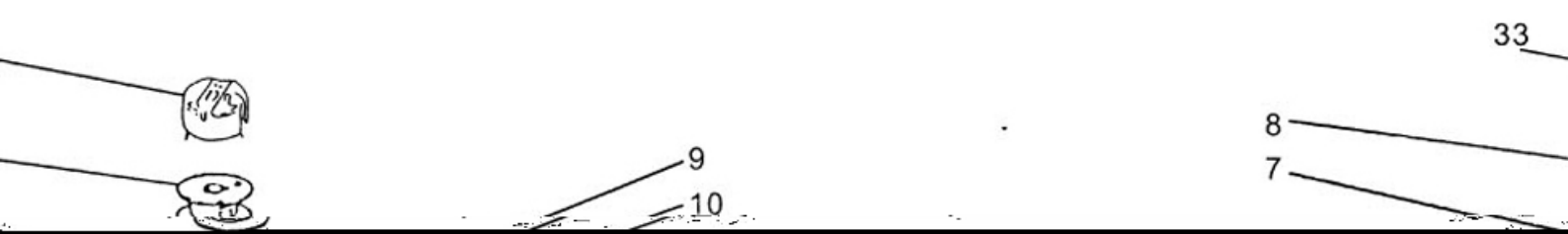
Q L WCK

mHRLDT

1 1 1 1 1 1

10、旋梭台部件

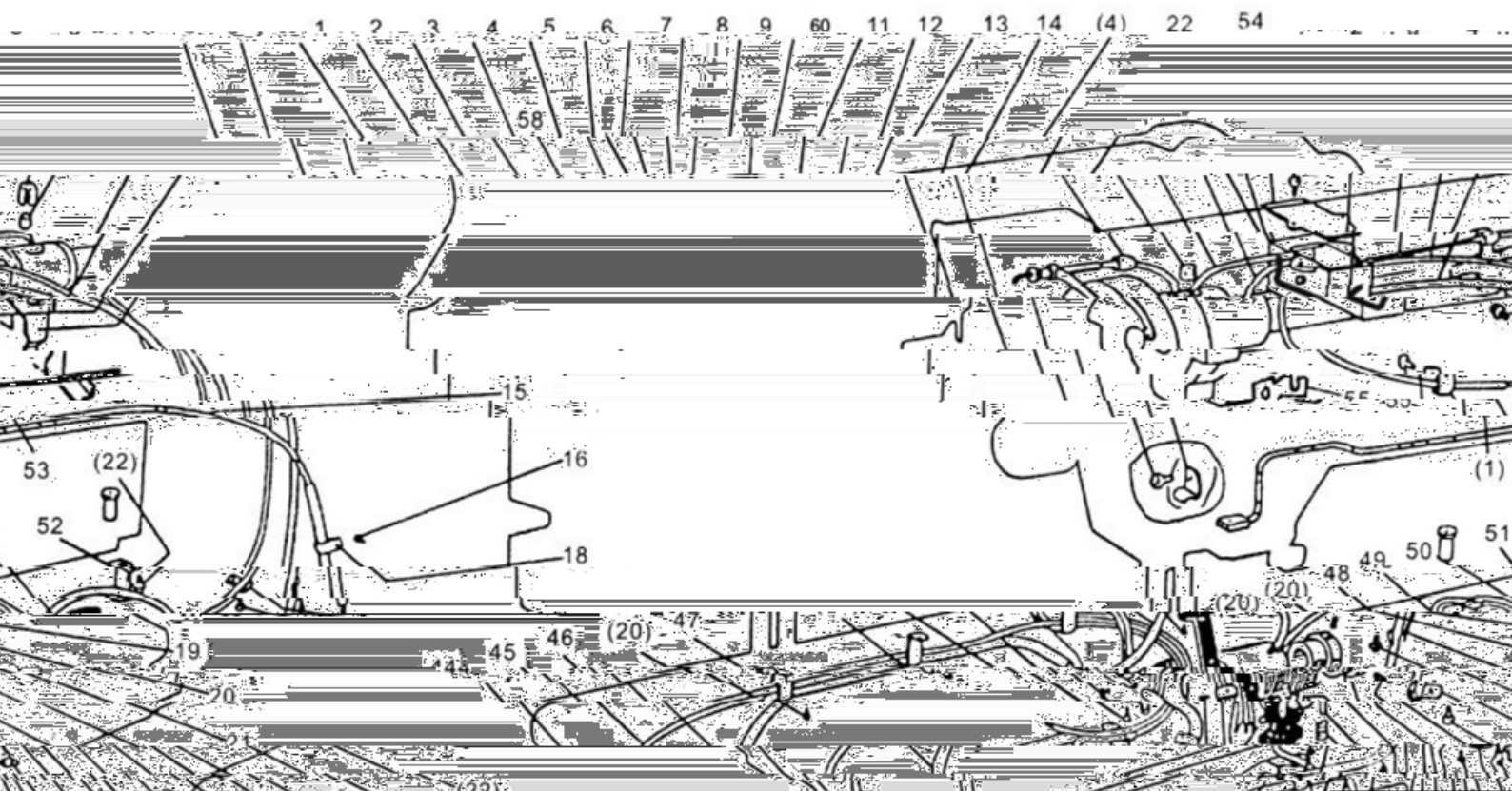
HOOK SADDLE MECHANISM



> LS2052 LS2252> 10.

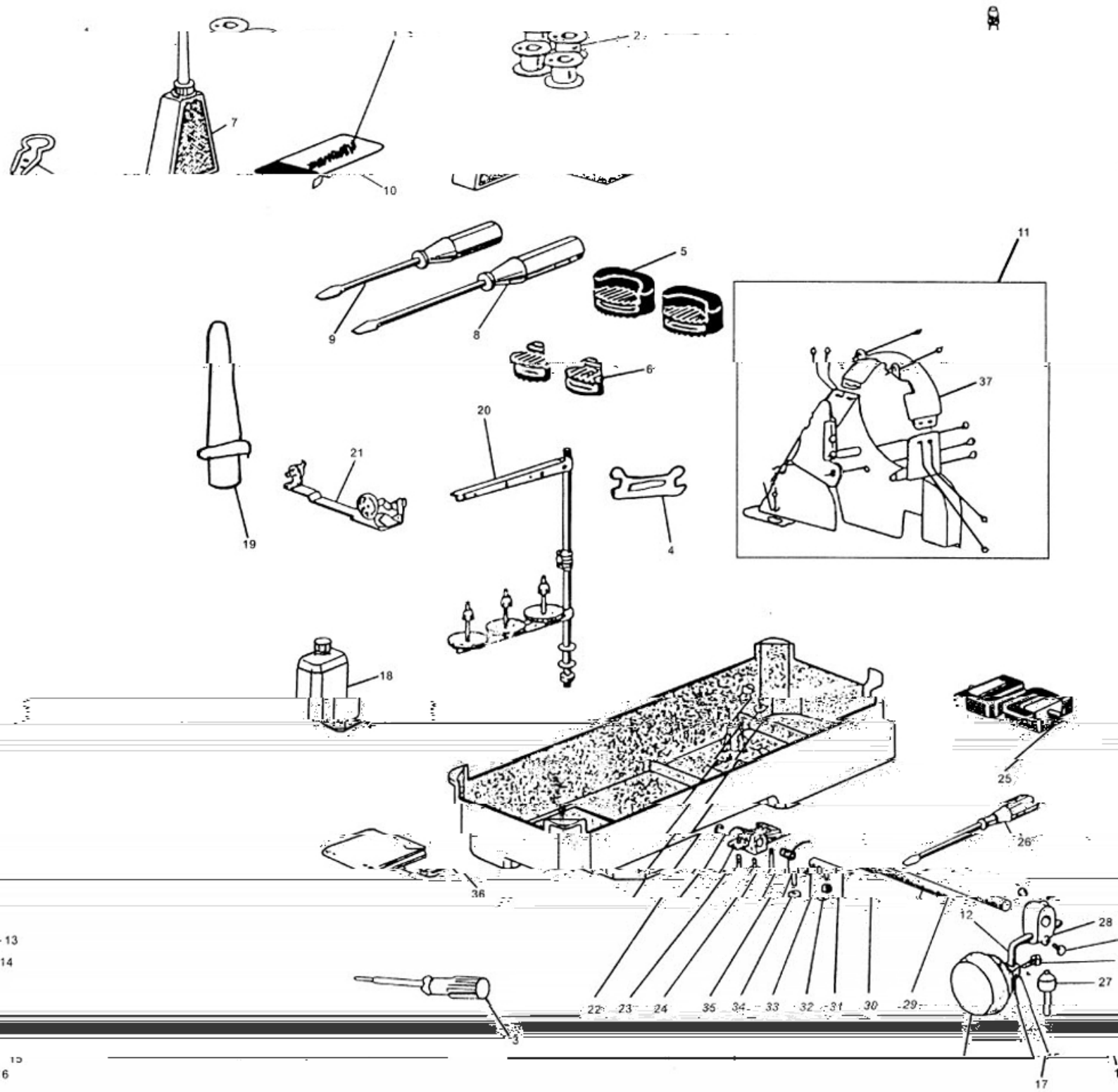
HOOK SADDLE MECHANISM

NO	CODE		NAME	AMT					
				2052	2052	2052	2252	2252	2252
				-3	-5	H	-3	-5	H
1	PF20521001	()	HOOK SADDLE(RI GHT)	1					
			WASHRT	2	2		2	2	
	PF2052H1004		WASHRT			2			2
5	PF68425H2701		SCREW SM5/64" × 28 L=30	2	2	2	2	2	2
6	PF68425H27		HOOK SADDLE BUSH NG	2	2	2	2	2	2
7	PF2052100701	DSH- 265	HOOK COMPLETE	2	2				
	PF2052H10070	DSH2- 260- 20	HOOK COMPLETE			2			
	PF2252H10070	DSH2- 275- 20	HOOK COMPLETE						2
	PF2252100701	DSH- 275	HOOK COMPLETE				2	2	
8	PF68425H41		BOBBI N	2	2		2	2	
	PF68725H41		BOBBI N			2			2
9	/		CI L WCK	2	2	2	2	2	2
10	PF20521010		BOBBI N CASE OPENER HOLDER PI N	2	2	2	2	2	2
11	PF20521011		SCREW	1	1	1	1	1	1
12	PF20521012		LI NK	2	2		2	2	
	PF2052H1012	H	LI NK			2			2
13	PF20521013		BOBBI N CADE OPENER HOLDER	2	2		2	2	
	PF2052H1013	H	BOBBI N CADE OPENER HOLDER			2			2
14			SPRI NG WASH ER	2	2	2	2	2	2
15	PF20521015		NUT	2	2	2	2	2	2
16	PF68425H52		SCREW SMØ/64" × 40 L=7	2	2	2	2	2	2
17			WASHER	2	2	2	2	2	2
18	PF20521018		OPENER	2	2		2	2	
	PF2052H1018	H	OPENER			2			2
19	PF20521019		BOLT	2	2	2	2	2	2
20	PF20521020	()	GEAR(SMALL)	2	2	2	2	2	2
21		()	GEAR(LARGE)	2	2	2	2	2	2
22	PF20521021		SCREW SM1/4" × 40 L=8	6	6	6	6	6	6
23	PF20521023	()	HOOK SHAFT BUSH NG (LOWER)	2	2	2	2	2	2
24			WASHER	2	2	2	2	2	2
25	PF20521025		SCREW SM1/4" × 24 L=19.5	2	2	2	2	2	2
26	PF20521026		SCREW	2	2	2	2	2	2
27	PF20521027		NUT	2	2	2	2	2	2
28	PF20521028		SPRI NG WASH ER	2	2	2	2	2	2
29	PF6150405		SCREW SM5/64" × 28 L=4.5	4	4	4	4	4	4
30			SCREW SM1/4" × 40 L=6	2	2	2	2	2	2
31			SCREW SM1/4" × 40 L=6.5	2	2	2	2	2	2
32	PF20521032	() 32H	HOOK SADDLE(LEFT)	1	1		1	1	
	PF2052H1033	() 33H	HOOK SADDLE(LEFT)			1			1
33		H	BOBBI N CASE						2
			BOBBI N CASE				2	2	



NO	CODE	NAME	AMT					
			2052	2052	2052	2252	2252	2252
			-3	-5	H	-3	-5	H
1	PF6150211	SCREW SM1/64" × 40 L=8	4	4	4	4	4	4
2	PF20521102	HOLDER	1	1	1	1	1	1
3	PF20521103	PI PE	1	1	1	1	1	1
4	PF20521104	FELT	2	2	2	2	2	2
5		Q L PI PE	1	1	1	1	1	1
6		Q L PI PE	1	1	1	1	1	1
7	PF20521107	Q L PI PE	1	1	1	1	1	1
8	PF20521108	GASKET	1	1	1	1	1	1
9	PF20521109	SCREW	2	2	2	2	2	2
11		Q L PI PE	1	1	1	1	1	1
12		Q L PI PE	1	1	1	1	1	1
13		Q L PI PE	1	1	1	1	1	1
14	PF20521114	PI PE	1	1	1	1	1	1
15		Q L PI PE	1	1	1	1	1	1
16	PF555068	SCREW SM \varnothing /64" × 40 L=6.5	7	7	7	7	7	7
18	PF20521118	HOLDER	2	2	2	2	2	2
19	PF20521119	HOLDER	2	2	2	2	2	2
20	PF5550117	SCREW SM1/64" × 40 L=5.5	7	7	7	7	7	7
21	PF20521121	HOLDER	1	1	1	1	1	1
22	PF68425B27	SCREW SM1/64" × 40 L=6	3	3	3	3	3	3
23	PF7810638	SCREW SM1/64" × 40 L=10	2	2	2	2	2	2
24	PF20521124	BUSH NG	1	1	1	1	1	1
25		Q L PI PE	1	1	1	1	1	1
26	PF20521126	PLUNGER	1	1	1	1	1	1
27	PF20521127	PLUNAER SPRI NG	1	1	1	1	1	1
28	PF20521128	PLUNAER SPRI NG PLATE	1	1	1	1	1	1
29	PF20521129	SCREW SM1/8" × 44 L=4.8	1	1	1	1	1	1
30	PF20521130	SCREW SM \varnothing /64" × 40 L=5	1	1	1	1	1	1
31	PF20521131	FI LTER	1	1	1	1	1	1
32	PF20521132	SCREW SM \varnothing /64" × 40 L=7	1	1	1	1	1	1
33	PF20521133	BASE PLATE	1	1	1	1	1	1
34	PF20521134	HOLDER	1	1	1	1	1	1
35	PF20521130	SCREW SM \varnothing /64" × 40 L=6	1	1	1	1	1	1
36		Q L PI PE	1	1	1	1	1	1
37	PF20521137	HOLDER	1	1	1	1	1	1
41	PF20521141	COVER	2	2	2	2	2	2
42		Q L PI PE	1	1	1	1	1	1
43		Q L PI PE	1	1	1	1	1	1
44		Q L WCK	3	3	3	3	3	3
45		Q L PI PE	1	1	1	1	1	1
46		Q L PI PE	1	1	1	1	1	1
47	PF20521147	HOLDER	3	3	3	3	3	3
48	PF20521148	HOLDER	1	1	1	1	1	1
49	PF20521149	Q L PI PE	1	1	1	1	1	1
50		Q L PI PE	1	1	1	1	1	1

51	PF6150420		SCREW SM1/64" × 40 L=10	2	2	2	2	2	2
52	PF20521152		HOLDER PLATE	1	1	1	1	1	1
53	PF20521153		HOLDER	1	1	1	1	1	1
54	PF20521154		HOLDER	1	1	1	1	1	1
55			HOLDER PLATE	1	1	1	1	1	1
56	PF20521156		Q L RUBD JO NT	1	1	1	1	1	1
57			Q L RUBD JO NT	2	2	2	2	2	2
58	PF20521158		Q L RUBD PI PE	1	1	1	1	1	1
60	PF20521160			1	1	1	1	1	1



>LS2052 LS2252> 12. ACCESSORIES

NO	CODE		NAME	AMT					
				2052	2052	2052	2252	2252	2252
				-3	-5	H	-3	-5	H
1	PFDTDP514	14#	NEEDLE	1			1		
	PFDTDP519	19#			2			2	
	PFDTDP522	22#	NEEDLE			1			1
2	PF68425H41		BOBBI N	2			2		
	PF68725H42	H	BOBBI N			2			2
3		10-14	DOUBLE-HEAD WRENCH	1	1	1	1	1	1
4	PF61501109		DOUBLE-HEAD WRENCH	1	1	1	1	1	1
5	PF555099	()	RUBBER CUSHION (BIG)	2	2	2	2	2	2
6	PF555098	()	RUBBER CUSHION (SMALL)	2	2	2	2	2	2
7	PF61501105		WRENCH	1	1	1	1	1	1
8	PF55501017	()	SCREW DRIVER (MIDDLE)	1	1	1	1	1	1
9	PF55501018	()	SCREW DRIVER (SMALL)	1	1	1	1	1	1
10	PF20521210		THREAD-IN DEVICE	1	1	1	1	1	1
11	PF0302821		BELT COVER SAM	1	1	1	1	1	1
12	PF5550922		KNEE LIFTER BELL CRANK	1	1	1	1	1	1
13			SCREW SM5/16" x 18 L=16	2	2	2	2	2	2
14	PF5550927		SCREW SM5/64" x 28 L=8	1	1	1	1	1	1
15	PF5550926		BRACKET FOR KNEE LIFTER PLATE	1	1	1	1	1	1
16	PF5550923		KNEE LIFTER PLATE	1	1	1	1	1	1
17	PF5550924		PAD FOR KNEE LIFTER PLATE	1	1	1	1	1	1
18	PF55501022		WRENCH	1	1	1	1	1	1
19	PF55501021		HEAD POLE	1	1	1	1	1	1
20	BF7003M7		THREAD STAND	1	1	1	1	1	1
21	PF61501001		BOBBI N WINDER ARM	1	1	1	1	1	1
22	PF20521222		WRENCH	1	1	1	1	1	1
23	PF6150902		WRENCH	1	1	1	1	1	1
24	PF20521224		WASHER	1	1	1	1	1	1
25	PF5550101		HINGE OF MACHINE HEAD ARM	2	2	2	2	2	2
26	PF68425Z104	()	SCREW DRIVER (LARGE)	1	1	1	1	1	1
27	PF20521227		WRENCH	1	1	1	1	1	1
28	PF20521228		WRENCH FOR KNEE LIFTER BELL CRANK	1	1	1	1	1	1
29	PF20521229		HINGE PIN	1	1	1	1	1	1
30	PF6150907		BACK SPRING FOR KNEE LIFTER	1	1	1	1	1	1
31	PF20521231		SCREW	1	1	1	1	1	1
32	PF20521232		ADJUSTING NUT	2	2	2	2	2	2
33	PF20521233		ADJUSTING SCREW	2	2	2	2	2	2
34	PF20521234		KNEE LIFTER LEVER	1	1	1	1	1	1
35	PF20521235		SNAP RING	1	1	1	1	1	1
36	PF5550102001		MACHINE COVER	1	1	1	1	1	1
37	PF0302821	()	BELT COVER (UPPER)	1	1	1	1	1	1
38	PF5550102402	M2		1	1	1	1	1	1